

cadwork[®]

*Solutions for Timber Construction,
Joinery & Interior Design*

3D CAD/CAM software developer,
specialising in timber construction,
from planning to production

**Supporting
you today in
the realization of
your projects
in the future**
www.cadwork.com

Table of contents

●	4	<i>Your Solutions</i>
●	6	<i>Conception - Takeoff</i>
●	8	<i>Extension - Renovation</i>
●	10	<i>Roof Framing</i>
●	12	<i>Wood Construction</i>
	14	<i>Historical Monument</i>
	16	<i>Joinery - Interior Design</i>
	18	<i>Staircase</i>
	20	<i>Optimization</i>
	22	<i>Survey - Reverse Engineering</i>
	24	<i>Engineering Structure</i>
	26	<i>CNC Fabrication</i>
	28	<i>Customer Projects</i>
	30	<i>Training</i>
	32	<i>Modules</i>

For all areas of application in construction, from design to production.

design **PLAN** build
PRODUCE quantify exchange
list **OPTIMISE** train
manage

As a wood specialist, cadwork has been the world market leader in construction solutions and software for almost 30 years.

With its comprehensive and flexible range of design and production modules, cadwork covers all areas of application in construction and supports you in all stages of a project.

Unparalleled flexibility and power to meet the needs of every business, using cutting-edge technologies that ensure maximum speed in viewing and editing.



Your Solutions



Who are we?

cadwork is a company of experts at your service. Our only goal is to accompany you in the development of your business, whether you are a craftsman, a small business or a multinational corporation: cadwork offers you a complete service, proven and constantly evolving software, the assurance of being supported by people who understand your business and your needs.

We have regrouped our solutions to offer you a range of professions through a simple image: the solution wheel. If you can't find what you're looking for, do not hesitate to come back to us. We will put together THE solution, and YOUR SOLUTION.

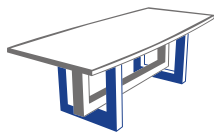
Efficient interactive operation

Timber construction is on the rise, but you can't build alone. cadwork is the essential interoperable software suite: PDF, DXF, IFC, DSTV, STEP, Revit, Rhino, Catia, connection to digital measurement tools, driving more than 150 machines... Choose the program that will allow you to have as little data as possible to re-enter and to work in harmony with as many users as possible.

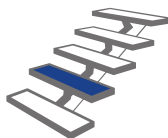
Do you want to go even further? Cadwork is the solution to integrate you in an OpenBIM process, interoperability is our DNA... Let us guide you.



MONUMENTS • JOINERY & INTERIOR DESIGN

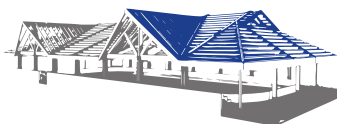


• STAIRCASE • LOGISTIC



work[®]

OLUTION ▪



RICATION • ENGINEERING STRUCTURE • SURVEY & REVERSE ENGINEERING

The pluses that make the difference



STATE-OF-ART SOLUTION

cadwork keeps abreast of new technologies to offer you the latest innovations in the construction world



PERSONALISED ADVICE

Our staff are ready to listen to your specific needs and advise you on the options you really need.



EFFICIENT TECHNICAL SUPPORT

Contact our hotline by phone or e-mail: we will get back to you within the day.



PRIVILEGED FOLLOW-UP

Our employees are always close to you, guaranteeing you a privileged and high quality follow-up, because the proximity and contact remain essential at cadwork.



PROFESSIONNALISME

As a world leader in the construction software and solutions market for almost 30 years, cadwork can confidently support you in the development of your business.



CUSTOMISED TRAINING

Individual or group training, at your place of business or in one of our offices: choose the formula that suits you the most to train your teams.



SOLUTION

Conception – Takeoff

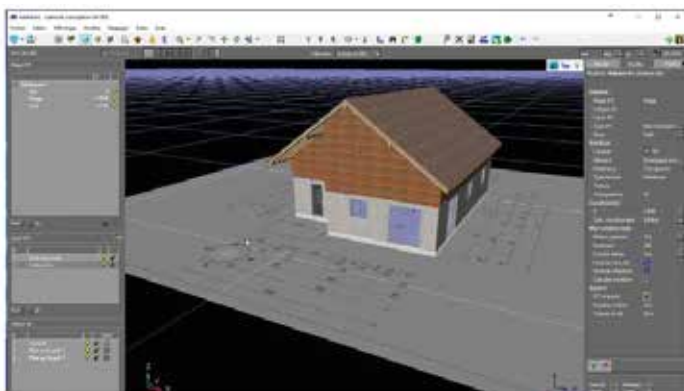
DESIGNING AND QUOTATING A PROJECT HAS NEVER BEEN SO EASY!

cadwork Conception is designed for all building professionals, whatever their profession.

Are you a constructor or a qualified craftsman such as a plasterer, tiler, mason or carpenter?

Design, list, optimize and calculate your jobsite in a simple and intuitive way.

- Quick drawing on a PDF
- IFC import
- Google Maps terrain import
- Instant quantity takeoff
- Customer presentation



Logic, the basis for design

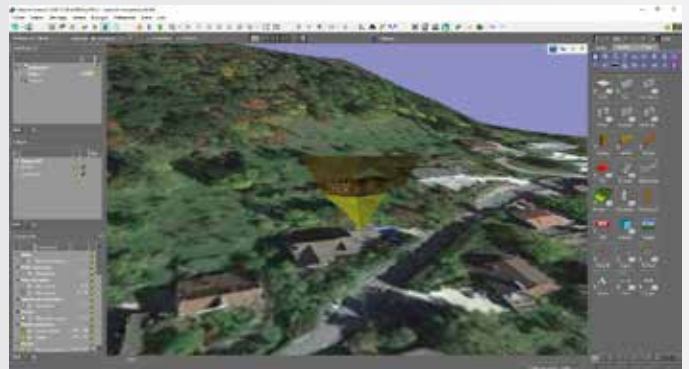
Since every construction is unique and depends on its environment, cadwork offers you cadwork Maps, a tool that allows you to quickly download map of part of the planet in 3D.

The integration of your design then becomes meaningful both during development and presentation.

Modeling terrain

Based on Google Maps data, the information is not precise enough (1 level point every 15 m). It is possible to project the data from a terrain survey made by yourself or by an external service provider (such as a surveyor or capture4cad) and remodel the terrain to obtain an accurate result.

Once the terrain has been modeled, you can clear the ground for a perfect integration.



Architectural design

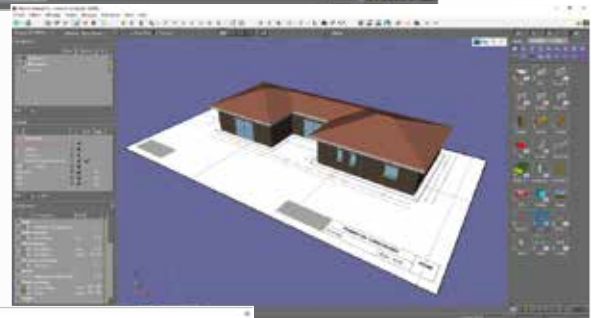
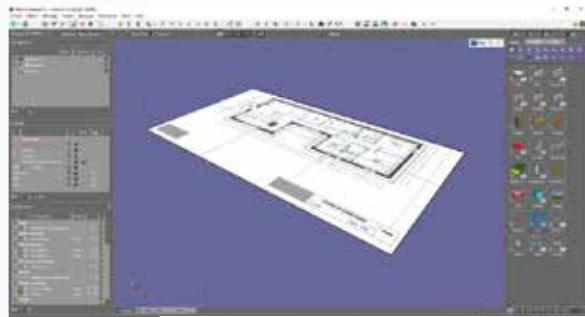
Design architectural projects quickly and easily. Start your projects in several ways: from a PDF drawing, an IFC file or a blank page. Then you can easily model your construction from there. Automatic section generation and dynamic 3D allow you to check whether all constraints are met.

The output of plans in PDF format, Google Maps integration and export to HTML format will allow you to present your projects in a bold way for a personalized projection as close as possible to the expectations of your clients.



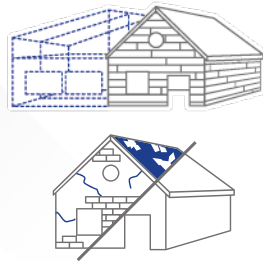
Quotation

Calculate your projects quickly and accurately. The quotation functions generate detailed lists by type of element and material. Then allow you to export the result in the form of Excel files and/or to integrate it directly into a quotation software.

A screenshot of a software interface showing a detailed list of elements and materials. The list is organized into columns and rows, with various colors and icons. The software interface includes various toolbars and panels around the central view.

This solution uses the following modules:
**CADWORK CONCEPTION, ROOFPARTS, AUTOWALL,
PDF IMPORT, MAPS, IFC IMPORT/EXPORT**

SOLUTION Extension Renovation



THE CREATION OF EXTENSIONS PLACES PARTICULARLY HIGH DEMANDS ON THE CAD SOLUTION.

With the Construction Pack (cadwork basic pack including 2D, 3D, Lists), you can easily create simple or complex constructions, manage the transition of facades to a glass structure, work down to the smallest detail, manage the combination of the most diverse materials, and work with specific profile and connector systems.

- Representation of the existing situation by digital survey
- Customer presentation
- Precise 3D drawing with all connections
- List of all material requirements
- 2D overview plans
- 2D EXE and PAC plans
- Machine

Renovation transforms an existing building into a new project that meets current requirements in terms of structural, technical, thermal and aesthetic performance.

The starting point of each renovation is the existing building, which must be modeled and on which changes are to be made.



These projects have the particularity of being grafted onto an existing structure.

They often require several technical details related to manufacturing, lifting or installation, which are specific to each project.

These projects highlight the mix of materials; they require before-and-after presentations, and also during the interventions on site.

Of course, the most important thing: respecting your client's requirements.

cadwork meets the requirements of these projects perfectly.

Creation of plans

Laser measuring devices are a must in this field: in combination with a Leica Builder theodolite, cadwork is the perfect tool for the extensions and verandas.

The preparation of precise assembly and construction plans, e.g. with the help of a drawing or an explosion, is part of the functionality of the cadwork basic package.

A Rendering to convince

You will also get professional renderings and be able to make videos to present your projects. The Artlantis rendering interface will give you all the possibilities to create high resolution renderings from your 3D models.





Company : Dimension Bois



Company : Vias ALU

List, plan en DPP

Code	Description	Quantité	Unité	Volume	Surface	Longueur	Poids	Coût
Menuiserie								
Menuiserie - Fenêtres								
101	Fenêtre 1200x1500	1	m ²	1,20	1,50	1,50	1,20	1,20
102	Fenêtre 1500x1200	1	m ²	1,50	1,20	1,20	1,50	1,20
103	Fenêtre 1800x1200	1	m ²	1,80	1,20	1,20	1,80	1,20
104	Fenêtre 1200x1800	1	m ²	1,20	1,80	1,80	1,20	1,20
105	Fenêtre 1500x1800	1	m ²	1,50	1,80	1,80	1,50	1,20
106	Fenêtre 1800x1800	1	m ²	1,80	1,80	1,80	1,80	1,20
107	Fenêtre 2100x1800	1	m ²	2,10	1,80	1,80	2,10	1,20
108	Fenêtre 2400x1800	1	m ²	2,40	1,80	1,80	2,40	1,20
109	Fenêtre 2700x1800	1	m ²	2,70	1,80	1,80	2,70	1,20
110	Fenêtre 3000x1800	1	m ²	3,00	1,80	1,80	3,00	1,20
111	Fenêtre 3300x1800	1	m ²	3,30	1,80	1,80	3,30	1,20
112	Fenêtre 3600x1800	1	m ²	3,60	1,80	1,80	3,60	1,20
113	Fenêtre 3900x1800	1	m ²	3,90	1,80	1,80	3,90	1,20
114	Fenêtre 4200x1800	1	m ²	4,20	1,80	1,80	4,20	1,20
115	Fenêtre 4500x1800	1	m ²	4,50	1,80	1,80	4,50	1,20
116	Fenêtre 4800x1800	1	m ²	4,80	1,80	1,80	4,80	1,20
117	Fenêtre 5100x1800	1	m ²	5,10	1,80	1,80	5,10	1,20
118	Fenêtre 5400x1800	1	m ²	5,40	1,80	1,80	5,40	1,20
119	Fenêtre 5700x1800	1	m ²	5,70	1,80	1,80	5,70	1,20
120	Fenêtre 6000x1800	1	m ²	6,00	1,80	1,80	6,00	1,20
121	Fenêtre 6300x1800	1	m ²	6,30	1,80	1,80	6,30	1,20
122	Fenêtre 6600x1800	1	m ²	6,60	1,80	1,80	6,60	1,20
123	Fenêtre 6900x1800	1	m ²	6,90	1,80	1,80	6,90	1,20
124	Fenêtre 7200x1800	1	m ²	7,20	1,80	1,80	7,20	1,20
125	Fenêtre 7500x1800	1	m ²	7,50	1,80	1,80	7,50	1,20
126	Fenêtre 7800x1800	1	m ²	7,80	1,80	1,80	7,80	1,20
127	Fenêtre 8100x1800	1	m ²	8,10	1,80	1,80	8,10	1,20
128	Fenêtre 8400x1800	1	m ²	8,40	1,80	1,80	8,40	1,20
129	Fenêtre 8700x1800	1	m ²	8,70	1,80	1,80	8,70	1,20
130	Fenêtre 9000x1800	1	m ²	9,00	1,80	1,80	9,00	1,20
131	Fenêtre 9300x1800	1	m ²	9,30	1,80	1,80	9,30	1,20
132	Fenêtre 9600x1800	1	m ²	9,60	1,80	1,80	9,60	1,20
133	Fenêtre 9900x1800	1	m ²	9,90	1,80	1,80	9,90	1,20
134	Fenêtre 10200x1800	1	m ²	10,20	1,80	1,80	10,20	1,20
135	Fenêtre 10500x1800	1	m ²	10,50	1,80	1,80	10,50	1,20
136	Fenêtre 10800x1800	1	m ²	10,80	1,80	1,80	10,80	1,20
137	Fenêtre 11100x1800	1	m ²	11,10	1,80	1,80	11,10	1,20
138	Fenêtre 11400x1800	1	m ²	11,40	1,80	1,80	11,40	1,20
139	Fenêtre 11700x1800	1	m ²	11,70	1,80	1,80	11,70	1,20
140	Fenêtre 12000x1800	1	m ²	12,00	1,80	1,80	12,00	1,20
141	Fenêtre 12300x1800	1	m ²	12,30	1,80	1,80	12,30	1,20
142	Fenêtre 12600x1800	1	m ²	12,60	1,80	1,80	12,60	1,20
143	Fenêtre 12900x1800	1	m ²	12,90	1,80	1,80	12,90	1,20
144	Fenêtre 13200x1800	1	m ²	13,20	1,80	1,80	13,20	1,20
145	Fenêtre 13500x1800	1	m ²	13,50	1,80	1,80	13,50	1,20
146	Fenêtre 13800x1800	1	m ²	13,80	1,80	1,80	13,80	1,20
147	Fenêtre 14100x1800	1	m ²	14,10	1,80	1,80	14,10	1,20
148	Fenêtre 14400x1800	1	m ²	14,40	1,80	1,80	14,40	1,20
149	Fenêtre 14700x1800	1	m ²	14,70	1,80	1,80	14,70	1,20
150	Fenêtre 15000x1800	1	m ²	15,00	1,80	1,80	15,00	1,20
151	Fenêtre 15300x1800	1	m ²	15,30	1,80	1,80	15,30	1,20
152	Fenêtre 15600x1800	1	m ²	15,60	1,80	1,80	15,60	1,20
153	Fenêtre 15900x1800	1	m ²	15,90	1,80	1,80	15,90	1,20
154	Fenêtre 16200x1800	1	m ²	16,20	1,80	1,80	16,20	1,20
155	Fenêtre 16500x1800	1	m ²	16,50	1,80	1,80	16,50	1,20
156	Fenêtre 16800x1800	1	m ²	16,80	1,80	1,80	16,80	1,20
157	Fenêtre 17100x1800	1	m ²	17,10	1,80	1,80	17,10	1,20
158	Fenêtre 17400x1800	1	m ²	17,40	1,80	1,80	17,40	1,20
159	Fenêtre 17700x1800	1	m ²	17,70	1,80	1,80	17,70	1,20
160	Fenêtre 18000x1800	1	m ²	18,00	1,80	1,80	18,00	1,20
161	Fenêtre 18300x1800	1	m ²	18,30	1,80	1,80	18,30	1,20
162	Fenêtre 18600x1800	1	m ²	18,60	1,80	1,80	18,60	1,20
163	Fenêtre 18900x1800	1	m ²	18,90	1,80	1,80	18,90	1,20
164	Fenêtre 19200x1800	1	m ²	19,20	1,80	1,80	19,20	1,20
165	Fenêtre 19500x1800	1	m ²	19,50	1,80	1,80	19,50	1,20
166	Fenêtre 19800x1800	1	m ²	19,80	1,80	1,80	19,80	1,20
167	Fenêtre 20100x1800	1	m ²	20,10	1,80	1,80	20,10	1,20
168	Fenêtre 20400x1800	1	m ²	20,40	1,80	1,80	20,40	1,20
169	Fenêtre 20700x1800	1	m ²	20,70	1,80	1,80	20,70	1,20
170	Fenêtre 21000x1800	1	m ²	21,00	1,80	1,80	21,00	1,20
171	Fenêtre 21300x1800	1	m ²	21,30	1,80	1,80	21,30	1,20
172	Fenêtre 21600x1800	1	m ²	21,60	1,80	1,80	21,60	1,20
173	Fenêtre 21900x1800	1	m ²	21,90	1,80	1,80	21,90	1,20
174	Fenêtre 22200x1800	1	m ²	22,20	1,80	1,80	22,20	1,20
175	Fenêtre 22500x1800	1	m ²	22,50	1,80	1,80	22,50	1,20
176	Fenêtre 22800x1800	1	m ²	22,80	1,80	1,80	22,80	1,20
177	Fenêtre 23100x1800	1	m ²	23,10	1,80	1,80	23,10	1,20
178	Fenêtre 23400x1800	1	m ²	23,40	1,80	1,80	23,40	1,20
179	Fenêtre 23700x1800	1	m ²	23,70	1,80	1,80	23,70	1,20
180	Fenêtre 24000x1800	1	m ²	24,00	1,80	1,80	24,00	1,20
181	Fenêtre 24300x1800	1	m ²	24,30	1,80	1,80	24,30	1,20
182	Fenêtre 24600x1800	1	m ²	24,60	1,80	1,80	24,60	1,20
183	Fenêtre 24900x1800	1	m ²	24,90	1,80	1,80	24,90	1,20
184	Fenêtre 25200x1800	1	m ²	25,20	1,80	1,80	25,20	1,20
185	Fenêtre 25500x1800	1	m ²	25,50	1,80	1,80	25,50	1,20
186	Fenêtre 25800x1800	1	m ²	25,80	1,80	1,80	25,80	1,20
187	Fenêtre 26100x1800	1	m ²	26,10	1,80	1,80	26,10	1,20
188	Fenêtre 26400x1800	1	m ²	26,40	1,80	1,80	26,40	1,20
189	Fenêtre 26700x1800	1	m ²	26,70	1,80	1,80	26,70	1,20
190	Fenêtre 27000x1800	1	m ²	27,00	1,80	1,80	27,00	1,20
191	Fenêtre 27300x1800	1	m ²	27,30	1,80	1,80	27,30	1,20
192	Fenêtre 27600x1800	1	m ²	27,60	1,80	1,80	27,60	1,20
193	Fenêtre 27900x1800	1	m ²	27,90	1,80	1,80	27,90	1,20
194	Fenêtre 28200x1800	1	m ²	28,20	1,80	1,80	28,20	1,20
195	Fenêtre 28500x1800	1	m ²	28,50	1,80	1,80	28,50	1,20
196	Fenêtre 28800x1800	1	m ²	28,80	1,80	1,80	28,80	1,20
197	Fenêtre 29100x1800	1	m ²	29,10	1,80	1,80	29,10	1,20
198	Fenêtre 29400x1800	1	m ²	29,40	1,80	1,80	29,40	1,20
199	Fenêtre 29700x1800	1	m ²	29,70	1,80	1,80	29,70	1,20
200	Fenêtre 30000x1800	1	m ²	30,00	1,80	1,80	30,00	1,20
201	Fenêtre 30300x1800	1	m ²	30,30	1,80	1,80	30,30	1,20
202	Fenêtre 30600x1800	1	m ²	30,60	1,80	1,80	30,60	1,20
203	Fenêtre 30900x1800	1	m ²	30,90	1,80	1,80	30,90	1,20
204	Fenêtre 31200x1800	1	m ²	31,20	1,80	1,80	31,20	1,20
205	Fenêtre 31500x1800	1	m ²	31,50	1,80	1,80	31,50	1,20
206	Fenêtre 31800x1800	1	m ²	31,80	1,80	1,80	31,80	1,20
207	Fenêtre 32100x1800	1	m ²	32,10	1,80	1,80	32,10	1,20
208	Fenêtre 32400x1800	1	m ²	32,40	1,80	1,80	32,40	1,20
209	Fenêtre 32700x1800	1	m ²	32,70	1,80	1,80	32,70	1,20
210	Fenêtre 33000x1800	1	m ²	33,00	1,80	1,80	33,00	1,20
211	Fenêtre 33300x1800	1	m ²	33,30	1,80	1,80	33,30	1,20
212	Fenêtre 33600x1800	1	m ²	33,60	1,80	1,80	33,60	1,20
213	Fenêtre 33900x1800	1	m ²	33,9				

SOLUTION

Roof Framing



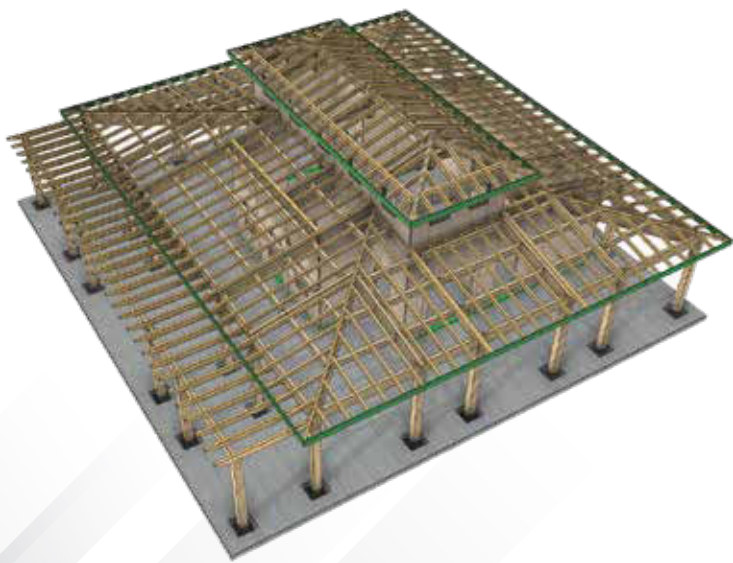
AUTOMATE YOUR ROOFS

In the past, the carpentry was often associated with the construction of roofs. Today, the field of activity of a carpenter's workshop has changed fundamentally.

That is why the various cadwork products and modules based on a 3D modeler make all your projects feasible and unlimited.

From the classic 2-sided roofs, traditional roof truss and multi-material roofs, cadwork offers you support modules to help you automate your roof truss.

- Precise 3D drawing with all connections
- 2D EXE and PAC plans
- 2D overview plans
- List of all material requirements
- Machine

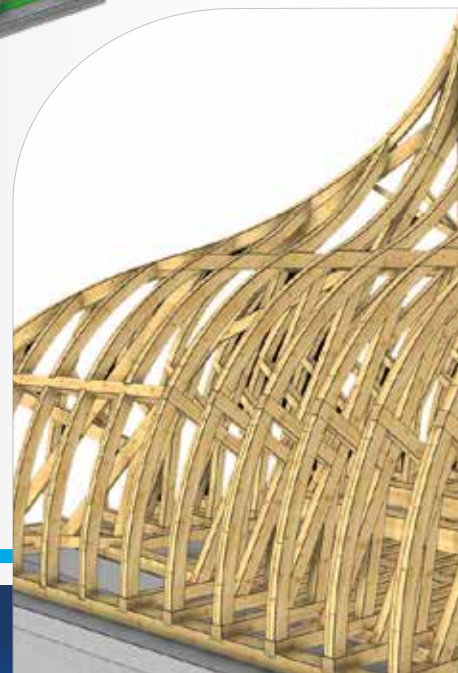
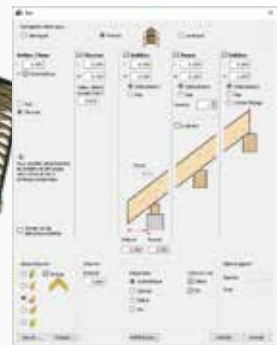


Timber Roof Truss

Define your roof connection automatically with the tools included in 3D.

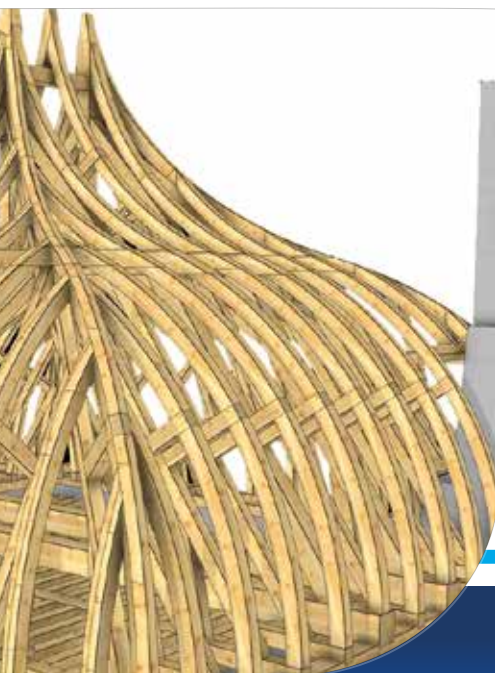
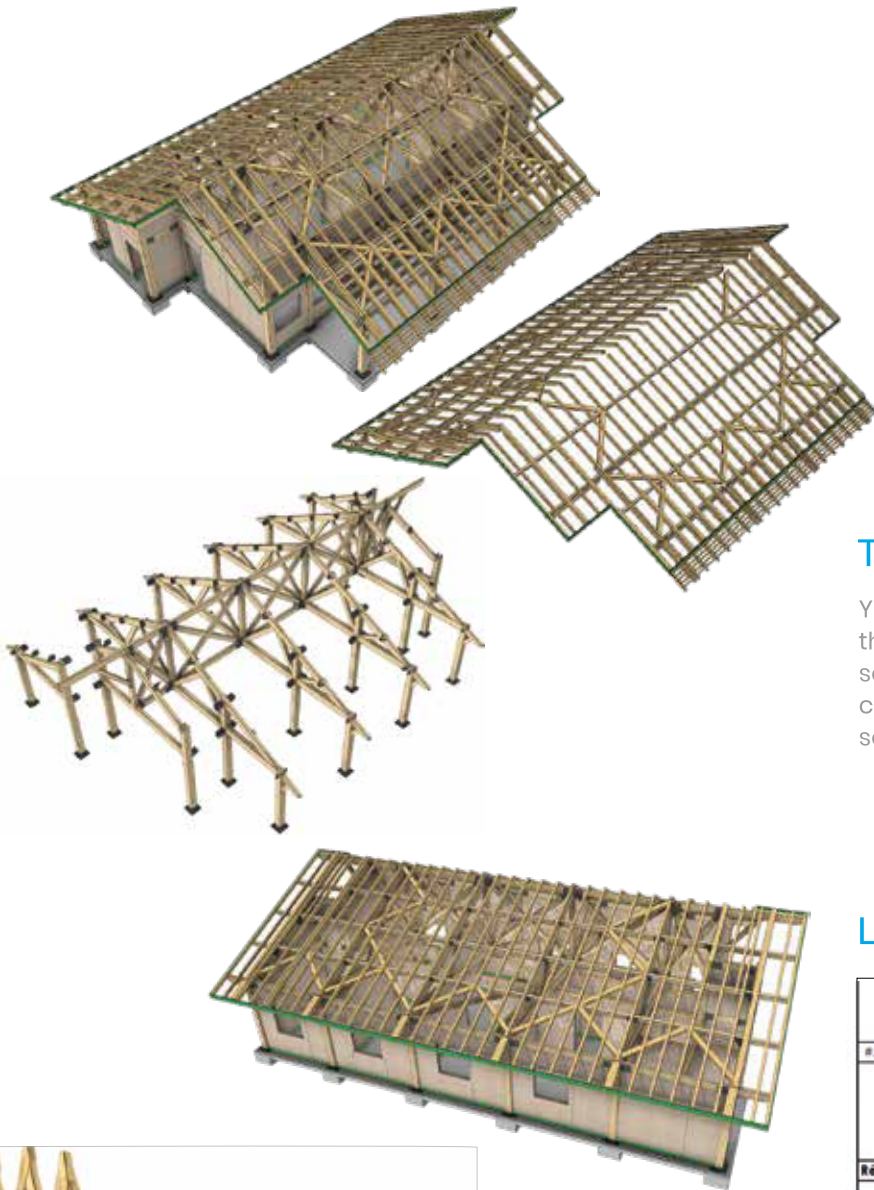
By indicating the roof slopes, the software will calculate the roof connection as a surface. The quantities of surfaces, eave, ridge, hip and valley lines are calculated instantly.

From these same surfaces, you will obtain in a few clicks the frame parts: rafters, purlins, ridges, hips/nuts.



Parametric Timber Roof Truss

Linked to the parametric trusses, the Roofing module is the tool for carpenter and roofer to edit lists and plans that can be used directly.



Truss

Your client has a smaller budget? You choose the truss? cadwork is compatible with most truss software: Mitek, Wolf, etc... Transfer your calculated data directly into your production software. This is also what OpenBIM is all about.

Lists

	Arétier	9.82 m
	Faillage horizontale	1.89 m
	Ligne d'égout horizontale	5.86 m
#5	Choix surface(s) Toit	30.44 m²
	Arétier	4.30 m
	Faillage horizontale	6.89 m
	Ligne d'égout horizontale	7.36 m
	Rive droit	4.27 m
Résumé		
	Surfaces Toit	105.02 m²
	Arétier	15.34 m
	Faillage horizontale	8.79 m
	Ligne d'égout horizontale	31.58 m
	Noue	4.30 m
	Rive droit	4.27 m

13	Aulbir	Sapin	1	75x110	4.347	0.035
14	Aulbir	Sapin	1	75x110	5.539	0.043
15	Aulbir	Sapin	1	75x110	5.539	0.042
16	Aulbir	Sapin	1	75x225	3.600	0.058
17	Aulbir	Sapin	1	75x225	4.846	0.079
18	Aulbir	Sapin	1	75x225	4.846	0.079
					0	0.335
Non-Pannes						
1	Falbris	Sapin	1	75x225	1.847	0.030
2	Falbris	Sapin	1	75x225	0.802	0.114
					2	0.144
Non-Noue						
19	Noue	Sapin	1	75x110	4.347	0.035
20	Noue	Sapin	1	75x225	3.600	0.058
					2	0.093

SOLUTION



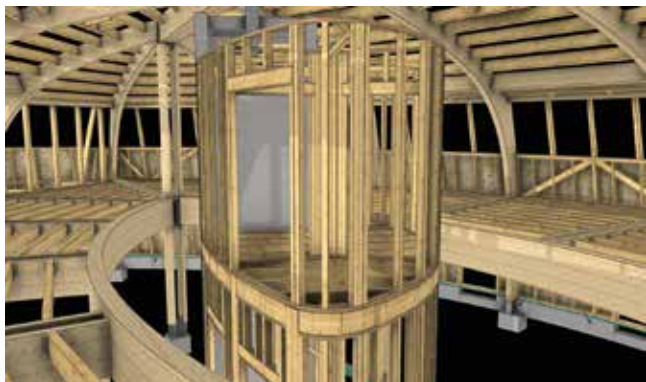
Wood Construction

ULTIMATE FLEXIBILITY AND SPEED AT THE TIP OF YOUR MOUSE

Do you know the advantage of using a 3D modeler? Your only limits are the ones you set for yourself. Whatever you imagine, you can draw it.

Think outside the box: cadwork is your tool, and you control it.

- Precise 3D drawing with all connections
- 2D EXE and PAC plans
- 2D overview plans
- List of all material requirements
- Machine

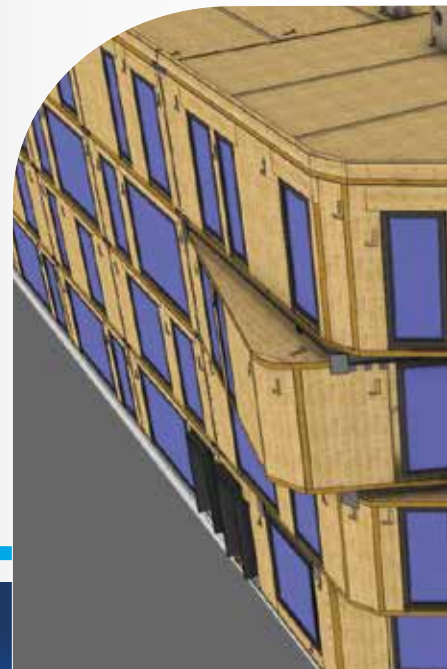


With cadwork, the construction system is not an option.

You are free to design any building shape with the materials you want.

Wood-wood, wood-metal, bolted connections, etc. are included as standard.

You have a complete tool: 3D drawing, material lists, hardware list, all necessary EXE / PAC plans and customer plans (plan views, sections, assembly details, etc...)





And much more...

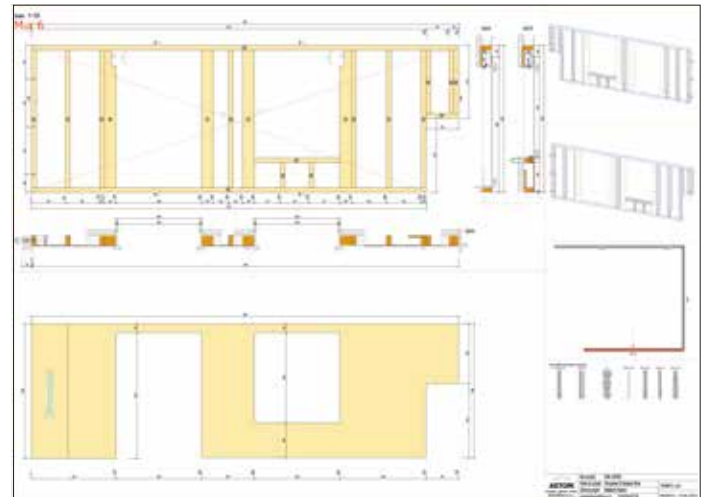
The Element module is your all-round solution for creating walls of various timber frame, post and beam and CLT. But you can also create floors (caissons, joists, CLT...), roof caissons, etc...

This module allows you to draw all assembly details between walls, floors, opening details of trimmers and reservation.

Therefore, you can quote in record time with a 3D that can be presented to your client via WebGL, in augmented or virtual reality. Your production plans are edited in a few clicks, ready to be printed and sent to the workshop.



Jobsite Astori - Villa Sa/van



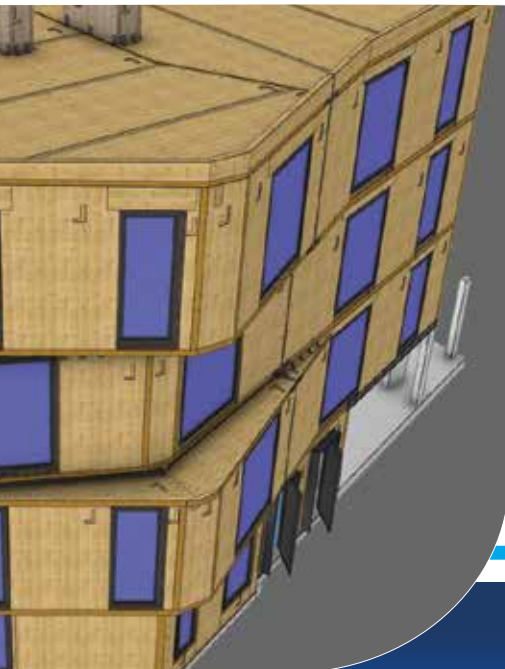
List



No.	SP/Frame	Material	Unit	Area	Weight	Length	Volume	Surface	
44	Chêne	110 - Éléments C24	2	40	1000	8,24			
24	Chêne	110 - Éléments C24	2	40	1000	8,24			
45	Chêne	110 - Éléments C24	2	40	1000	8,24			
52	Chêne	110 - Éléments C24	2	40	1000	8,24			
53	Chêne	110 - Éléments C24	2	40	1000	8,24			
54	Chêne	110 - Éléments C24	2	40	1000	8,24			
55	Chêne	110 - Éléments C24	2	40	1000	8,24			
56	Chêne	110 - Éléments C24	2	40	1000	8,24			
57	Chêne	110 - Éléments C24	2	40	1000	8,24			
58	Chêne	110 - Éléments C24	2	40	1000	8,24			
59	Chêne	110 - Éléments C24	2	40	1000	8,24			
60	Chêne	110 - Éléments C24	2	40	1000	8,24			
61	Chêne	110 - Éléments C24	2	40	1000	8,24			
62	Chêne	110 - Éléments C24	2	40	1000	8,24			
63	Chêne	110 - Éléments C24	2	40	1000	8,24			
64	Chêne	110 - Éléments C24	2	40	1000	8,24			
65	Chêne	110 - Éléments C24	2	40	1000	8,24			
66	Chêne	110 - Éléments C24	2	40	1000	8,24			
67	Chêne	110 - Éléments C24	2	40	1000	8,24			
68	Chêne	110 - Éléments C24	2	40	1000	8,24			
69	Chêne	110 - Éléments C24	2	40	1000	8,24			
70	Chêne	110 - Éléments C24	2	40	1000	8,24			
71	Chêne	110 - Éléments C24	2	40	1000	8,24			
72	Chêne	110 - Éléments C24	2	40	1000	8,24			
73	Chêne	110 - Éléments C24	2	40	1000	8,24			
74	Chêne	110 - Éléments C24	2	40	1000	8,24			
75	Chêne	110 - Éléments C24	2	40	1000	8,24			
76	Chêne	110 - Éléments C24	2	40	1000	8,24			
77	Chêne	110 - Éléments C24	2	40	1000	8,24			
78	Chêne	110 - Éléments C24	2	40	1000	8,24			
79	Chêne	110 - Éléments C24	2	40	1000	8,24			
80	Chêne	110 - Éléments C24	2	40	1000	8,24			
81	Chêne	110 - Éléments C24	2	40	1000	8,24			
82	Chêne	110 - Éléments C24	2	40	1000	8,24			
83	Chêne	110 - Éléments C24	2	40	1000	8,24			
84	Chêne	110 - Éléments C24	2	40	1000	8,24			
85	Chêne	110 - Éléments C24	2	40	1000	8,24			
86	Chêne	110 - Éléments C24	2	40	1000	8,24			
87	Chêne	110 - Éléments C24	2	40	1000	8,24			
88	Chêne	110 - Éléments C24	2	40	1000	8,24			
89	Chêne	110 - Éléments C24	2	40	1000	8,24			
90	Chêne	110 - Éléments C24	2	40	1000	8,24			
91	Chêne	110 - Éléments C24	2	40	1000	8,24			
92	Chêne	110 - Éléments C24	2	40	1000	8,24			
93	Chêne	110 - Éléments C24	2	40	1000	8,24			
94	Chêne	110 - Éléments C24	2	40	1000	8,24			
95	Chêne	110 - Éléments C24	2	40	1000	8,24			
96	Chêne	110 - Éléments C24	2	40	1000	8,24			
97	Chêne	110 - Éléments C24	2	40	1000	8,24			
98	Chêne	110 - Éléments C24	2	40	1000	8,24			
99	Chêne	110 - Éléments C24	2	40	1000	8,24			
100	Chêne	110 - Éléments C24	2	40	1000	8,24			
Somme totale:							824		82,4

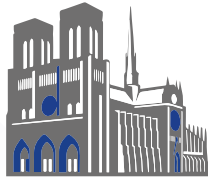


Company : Bourguignon SA



This solution uses the following modules:
2D, 3D, LIST+DPP, ROOFPARTS, AUTOWALL, BIM MANAGEMENT TOOL (BMT), WEBVIEWER, ELEMENT

SOLUTION Historical Monument



Carpentry, stonemasonry, building salvage: thanks to its free and unlimited design, cadwork has become the leader among specialists for historical monuments.

From restoration situation to scaffolding then to complete reconstruction, the powerful 3D modeler allows you to design even the most complex parts in the basic version.

Photogrammetry, total station, scanner: our compatibility with the different types of measuring devices will allow you to model reality.

- Precise 3D drawing with all connections
- 2D EXE and PAC plans
- 2D overview plans
- List of all material requirements
- Machine



Our commitment

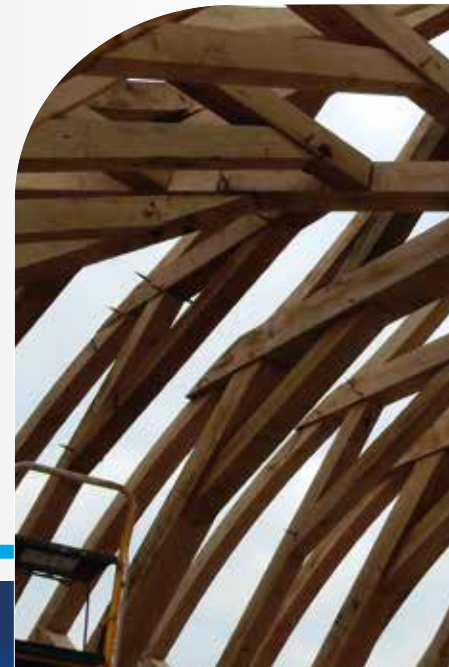
Preserving our history is what cadwork is committed to, by providing you with turnkey solutions, from the acquisition service, or assistance in the purchase and use of measuring tools, right through to the driving of your cutting machines and/or the production of manufacturing plans.

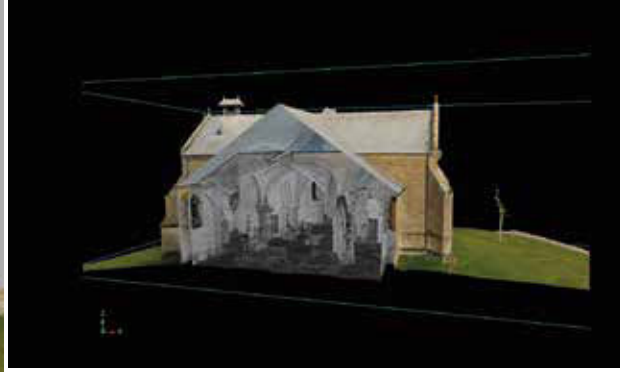
Using the Cadwork 3D modeler means you can model everything. Supported by our C-Faster solution, you can be sure to model everything accurately. In addition, with the edition of individual parts lists and overall plans, you will have your solution for restoring the most beautiful monuments in the world.

Cadwork, the reference professional software for historical monument.



Company Asselin : Chantier Vannes





Battais Charpentes : Charpente Moulin



SOLUTION

Joinery - Interior design



CADWORK, THE CUSTOMISED SOLUTION THAT ADAPTS TO YOUR NEEDS AND OFFERS YOU THE ADVANTAGES OF AN ALL-IN-ONE SOFTWARE!

On one hand, a free design tool, and on the other hand, the possibility to set up your standard furniture, combining speed and creativity.

Build freely, make stairs in an automated way, create and modify standards parts easily by variable means. You have all the tools you need to create your most beautiful works, and all this in a perfect interoperability.

- Representation of the project environment (walls, doors, windows, floors)
- JTC, design tool for furniture bodies and facades
- 3D client presentation
- Precise 3D drawing
- 2D EXE and PAC plans
- 2D overview plans
- Lists of material requirements
- Optipanneaux: optimization of material
- Machine



Unlimited 3D modeling

The cadwork solution is based on a 3D modeler that allows you to create a virtual model, from which 2D and 3D drawings, sales renderings, quantities for quotations, timber lists for orders, manufacturing drawings, machine data and much more are extracted.

You can create quickly your drafts and make 3D presentations according to your customers' requirements without wasting time.

Configure and save your preferences to optimize your working time.

Thanks to a pre-configured assembly library, the production details are correctly transferred to your machining centers.

With cadwork you will convince your customers and partners.



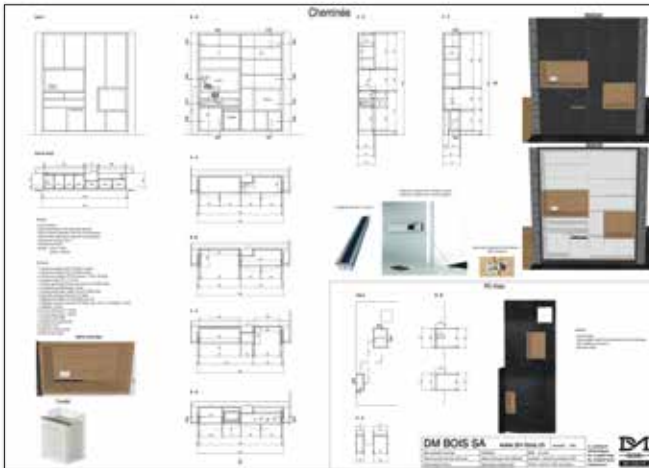
The link with Blum configurator will allow you to create drawers with all the necessary configurations for your project.

You will be able to save your furniture designs to apply them at any time in other projects and other dimensions.

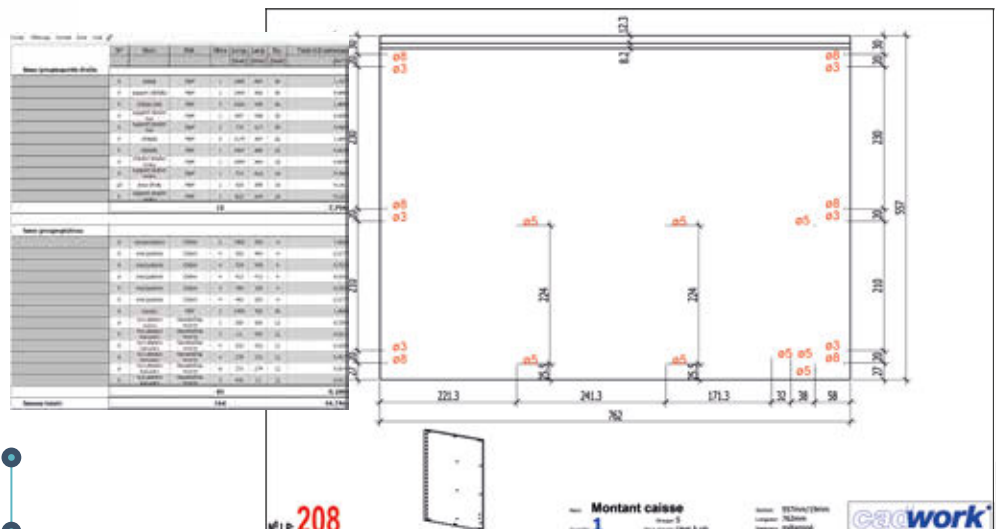
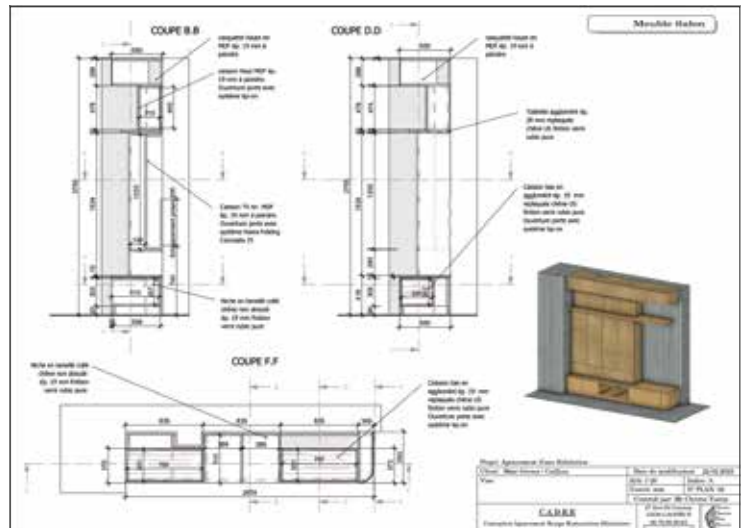
JTC is included in the Package Interior design. It is not an option.



With this flexible and powerful tool for furniture design, you will be able to design from the cabinet to the details of all the assemblies (Clamex, Lamello, eccentrics, System 32...), partitions, drawers, fronts, worktops, plinths and finishes in a very short time.



Lists+ Furniture plan



SOLUTION Staircase



THE PARAMETRIC, BUT NOT ONLY ...

Thanks to the provided parametric models, you can quickly create standard staircases by using the cadwork Staircase module. But you can also realize all your desires projects by using the cadwork 3D module.

- Freedom of view in staircase plan
- Parametric values to define a staircase
- Digital survey 3D scan, Photogrammetry
- Precise 3D drawing with all connections
- 2D EXE and PAC plans
- 2D overview plans
- List of all material requirements
- Machine



How does it work?

The Staircase module is an add-on module to cadwork 3D or 2D.

It allows you to generate a 3D model of your staircase by selecting a model and editing its parameters.

This 3D model can then be modified, enhanced and optimised directly in the 3D modeller.

The edition of plans and lists is then done automatically.

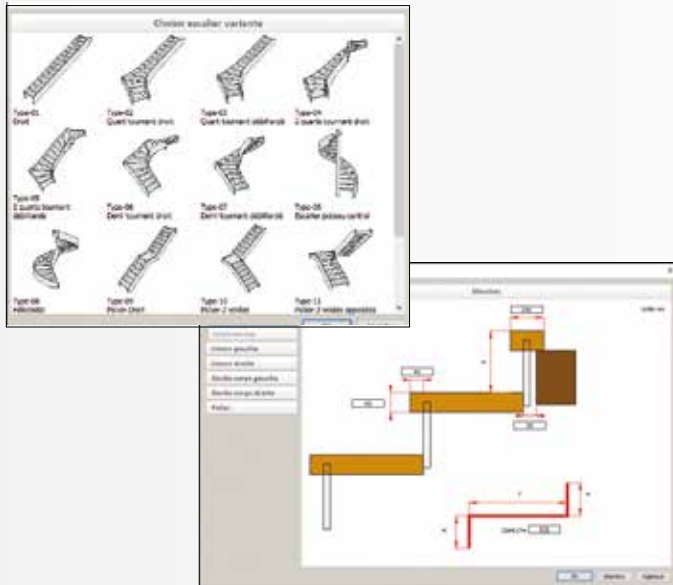
Interface

A simple and entertaining interface that guides you in its parameterization, this is the commitment of this module to simplify its use.

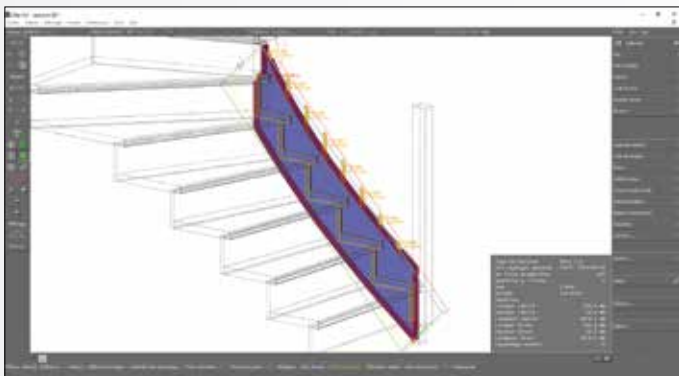


Module

The Staircase module will allow you to quickly create multi-piece stairs, with landings or spiral stairs...
By defining the plan view of your stairs, the software will automatically calculate the heights of the steps, the balancing, the swing gates, the stringer assemblies...

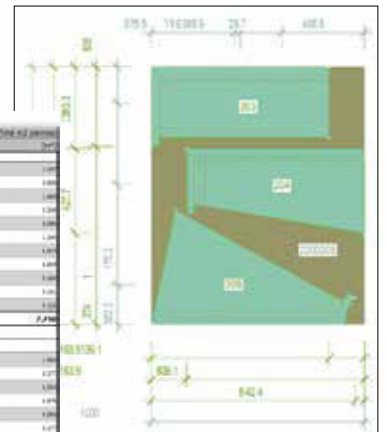


Machine



Lists + plan

Item	Description	Qty	Unit	Material	Color	Finish	Notes
1	Stringer	2	m	Alu	Alu	Alu	
2	Stringer	2	m	Alu	Alu	Alu	
3	Stringer	2	m	Alu	Alu	Alu	
4	Stringer	2	m	Alu	Alu	Alu	
5	Stringer	2	m	Alu	Alu	Alu	
6	Stringer	2	m	Alu	Alu	Alu	
7	Stringer	2	m	Alu	Alu	Alu	
8	Stringer	2	m	Alu	Alu	Alu	
9	Stringer	2	m	Alu	Alu	Alu	
10	Stringer	2	m	Alu	Alu	Alu	
11	Stringer	2	m	Alu	Alu	Alu	
12	Stringer	2	m	Alu	Alu	Alu	
13	Stringer	2	m	Alu	Alu	Alu	
14	Stringer	2	m	Alu	Alu	Alu	
15	Stringer	2	m	Alu	Alu	Alu	
16	Stringer	2	m	Alu	Alu	Alu	
17	Stringer	2	m	Alu	Alu	Alu	
18	Stringer	2	m	Alu	Alu	Alu	
19	Stringer	2	m	Alu	Alu	Alu	
20	Stringer	2	m	Alu	Alu	Alu	
21	Stringer	2	m	Alu	Alu	Alu	
22	Stringer	2	m	Alu	Alu	Alu	
23	Stringer	2	m	Alu	Alu	Alu	
24	Stringer	2	m	Alu	Alu	Alu	
25	Stringer	2	m	Alu	Alu	Alu	
26	Stringer	2	m	Alu	Alu	Alu	
27	Stringer	2	m	Alu	Alu	Alu	
28	Stringer	2	m	Alu	Alu	Alu	
29	Stringer	2	m	Alu	Alu	Alu	
30	Stringer	2	m	Alu	Alu	Alu	
31	Stringer	2	m	Alu	Alu	Alu	
32	Stringer	2	m	Alu	Alu	Alu	
33	Stringer	2	m	Alu	Alu	Alu	
34	Stringer	2	m	Alu	Alu	Alu	
35	Stringer	2	m	Alu	Alu	Alu	
36	Stringer	2	m	Alu	Alu	Alu	
37	Stringer	2	m	Alu	Alu	Alu	
38	Stringer	2	m	Alu	Alu	Alu	
39	Stringer	2	m	Alu	Alu	Alu	
40	Stringer	2	m	Alu	Alu	Alu	
41	Stringer	2	m	Alu	Alu	Alu	
42	Stringer	2	m	Alu	Alu	Alu	
43	Stringer	2	m	Alu	Alu	Alu	
44	Stringer	2	m	Alu	Alu	Alu	
45	Stringer	2	m	Alu	Alu	Alu	
46	Stringer	2	m	Alu	Alu	Alu	
47	Stringer	2	m	Alu	Alu	Alu	
48	Stringer	2	m	Alu	Alu	Alu	
49	Stringer	2	m	Alu	Alu	Alu	
50	Stringer	2	m	Alu	Alu	Alu	



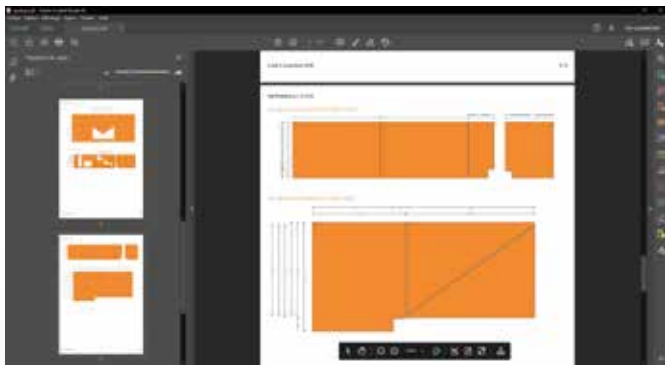
SOLUTION Optimization



OPTIMISING YOUR JOBSITES DIRECTLY FROM YOUR 3D

As the market leader in timber construction software, joinery and interior design industries, cadwork offers you ideal solutions to simplify your daily work. Today's high-performance tools offer you maximum precision and ease of use.

- Material optimization
- Transport optimization
- Direct link to cadwork 3D
- Result feedback in cadwork





Optipanneaux





Save money by optimizing your panel output. Define all commercial dimensions from your supplier. Then export your panels directly from cadwork. Optipanneaux will find the best way to produce your parts with minimal off-cuts, while following your cut thickness and trim parameters. Choose from which width the off-cuts are reusable, Optipanneaux will put them back in stock for your next production runs.

Optimization in only 4 steps!

- 

1 Storage
Definition of commercial dimensions from your supplier
- 

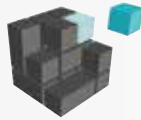
2 Panel management
Import the panel list to be cut.
- 

3 Optimization
Definition of the parameters of cutting and trim thickness and performance of the calculation.
- 

4 Results
Display of results in graphical and list form with cut-off percentage and export to PDF.



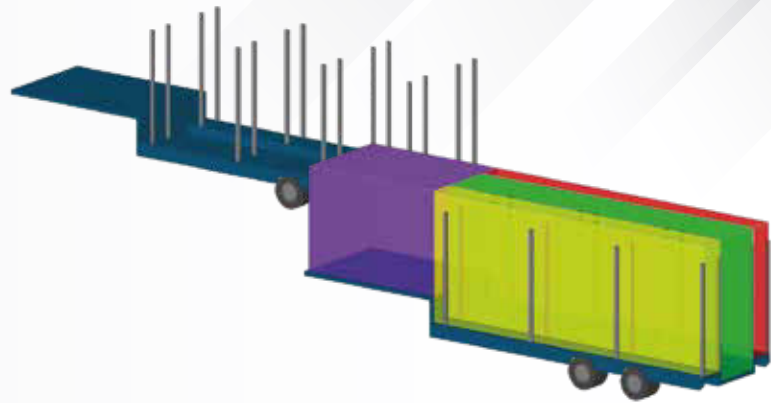
Opticargo



Simulate and optimize your loads!

Precise and efficient positioning of elements in the truck allows you to save on your transport costs. The load planning process with Opticargo software saves you time and additional costs.

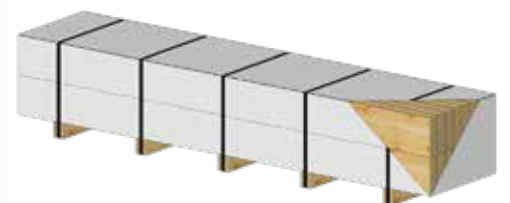
Size of the trailer and definition of the loading areas. **2**



1
cadwork 3D:
Drawing of a house composed of timber frame walls (or CLT), joisting, various structural elements.



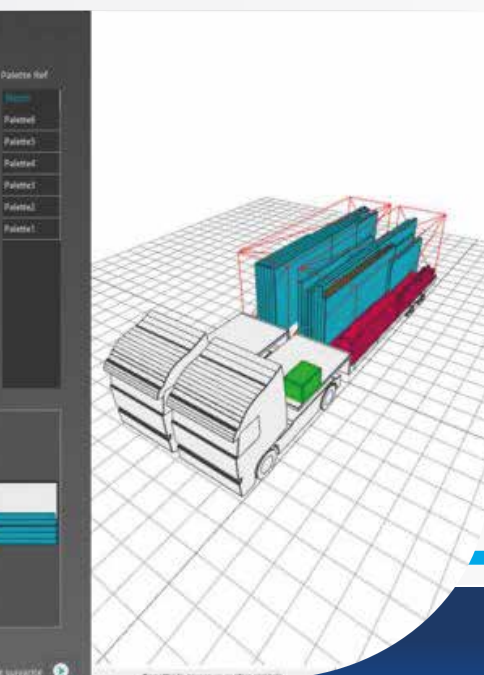
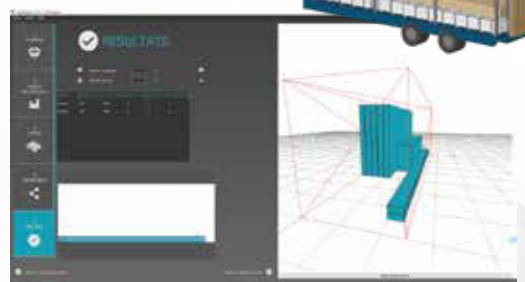
Definition of maximum package or pallet size. **3**



Optimization of pallet **4**

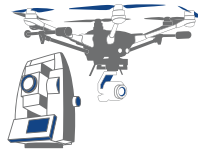


Optimization of the load including walls, packages and separate elements such as long beams. **5**



SOLUTION

Survey & Reverse engineering



SIMPLE, FAST AND SAFE SURVEYING

cadwork waits for your customized measurements from your total station and plots your points, lines and surfaces directly in 3D. Precise measurements to millimeter, both in surveying and in layout.

Land, interior, facade, roof, etc., everything you see can be implemented in the cadwork suite, without scaffolding and in complete safety.

DIGITISE THE EXISTING

- Fast and accurate quotation
- Reverse engineering
- 3D design
- Layout



Outdoor surveying

Simplify all your measuring tasks with manual total stations compatible with our modelers.

In combination with the live unit or by importing your survey via USB stick, you can ensure that your design, quantity surveying and production are based on reliable and highly accurate measurements. The dynamic mode (direct connection to the PC) provides a real-time and simplified visualization that allows you to process the data with peace of mind.

Building applications: various measurement points taken by a tachymeter (existing building, slab survey, etc.) are transmitted directly to cadwork 3D. The result is displayed in real time as points, lines and surfaces in cadwork 3D and cadwork Conception.

Scanning and 3D laser survey

The 3D laser surveys allow a complete digitization of the environment via 360° laser measurements ranging from 50 cm to 130 m with an accuracy of 2 mm to 10 m in form of point cloud. These measurements are supplemented by an HDR image taken by the scanner, also over 360°, to obtain a color result and a photo that help in the overall understanding.

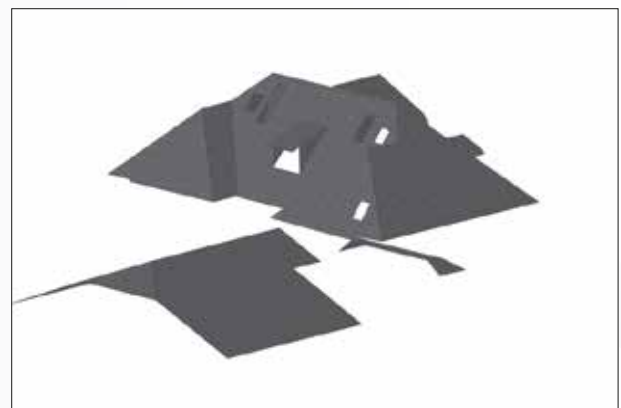
This technique guarantees an unparalleled reliability of measurement for your project with an overall measurement error of 4mm on average.



Photogrammetry

Photogrammetry is based on the assembly of multiple aerials and/or terrestrial photos, with the aim of obtaining a 3D model. Applicable to any scale from a ballpoint pen to the Eiffel Tower. This process provides a detailed and colorful reproduction of reality, with an accuracy of between 1 and 10 cm depending on the final use.

This technique facilitates facade or roof surveys for your quotations: it also allows you to create 3D models for the preparation of urban development, scaffolding or CIP.



SOLUTION

Engineering Structure

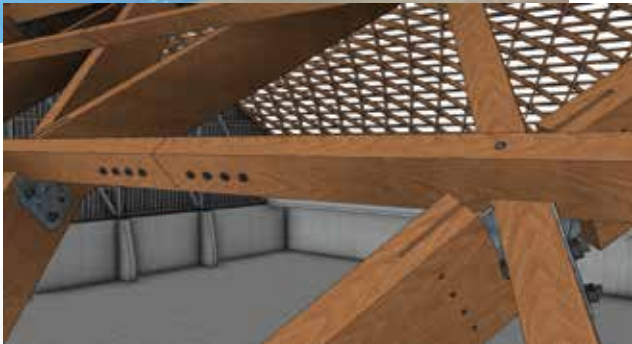
FLEXIBILITY FOR DIVERSE PROJECTS OF ENGINEERING OFFICES

The engineering office, which is responsible for the feasibility of the most ambitious projects, requires specialized tools and seamless support.

Trust cadwork and its teams to accompany you in the most audacious projects.

- Precise 3D drawing with all connections
- 2D overview plans
- 2D EXE and PAC plans
- List of all material requirements

Dimensioning of structures



Constructive systems

The cadwork solutions will allow all timber engineers to have a solution for the design of all kinds of buildings from the basic version. Yes, with cadwork, constructive systems are not an option!

All buildings are constructed with 3 families of materials: wood, metal and concrete. Based on this fact, we offer you the same flexibility and speed to design wood, metal and concrete, even if we prefer wood. For example, for the masonry lot, you will be able to edit the plans for the reservations in the walls, the post layouts for the foundations with the necessary comments and dimensions, etc.

For the timber construction part, you will design buildings for all purposes: individual houses, high rise collective housing, sports facilities, logistic platforms, offices, medical buildings, etc.. With Rhino.inside cadwork gateway connecting Grasshopper to cadwork, you can design the most complex shapes as well as the simplest.



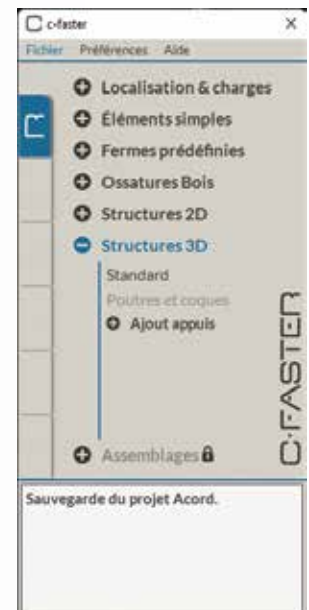
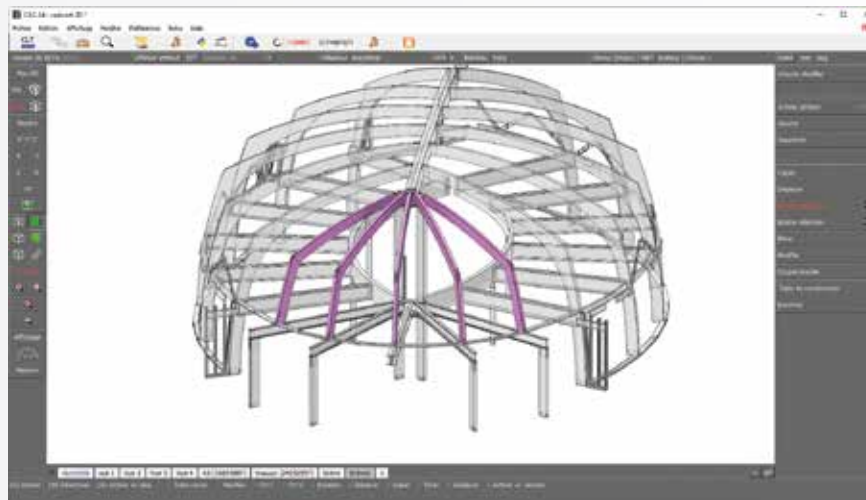
Stability of structures

Let's not forget the stability of buildings: our latest efforts have been focused on the development of a highly efficient link with our partner Itech and its ACORD suite.

In a few clicks, C-Faster will take care of the geometric translation of cadwork 3D drawing to ACORD EXPRESS, CVT, ACORD BAT 2D and 3D. You will edit your calculation notes very quickly for CLT, timber frame, wood frame, metal frame and mixed wood/metal structures.

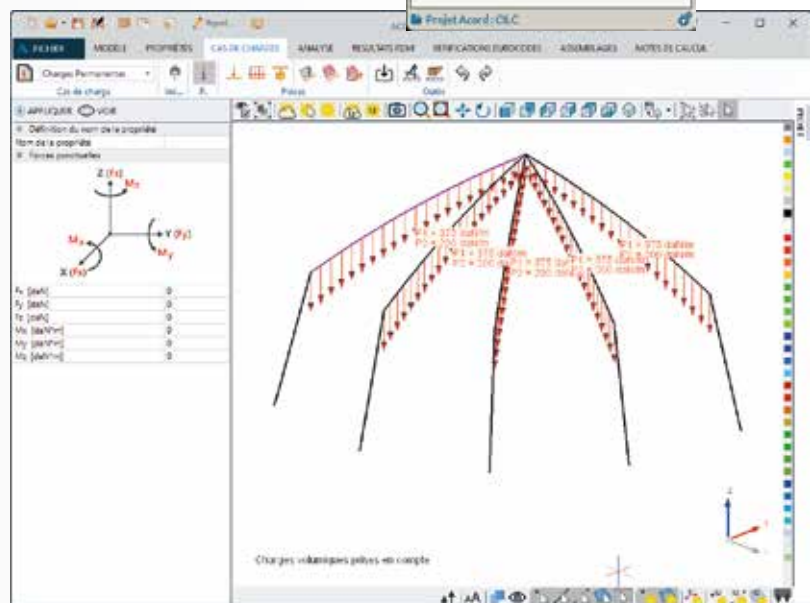
Openness

Now let's talk about openness to other software. Working in the building industry means coordinating with other sectors. The high compatibility of cadwork with the most common formats will allow you to communicate easily in 3D and 2D with your interlocutors for exchanges without loss of information and accuracy. Some formats: DXF/DWG, IFC, 3DM, RVT/RFA, STEP, SAT...



Lisa.blue by work4you

In independent use or integrated with C-Faster, obtain climatic and seismic calculation notes according to Eurocode and SIA. www.lisa.blue



SOLUTION

CNC Fabrication

CADWORK MACHINE

As complementary to 3D, this solution allows the preparation of 3D data for wood machining centers. In just a few clicks, your design is translated into machine data for rapid production in line with your project.

Different control systems:

- carpentry machine, wood construction (walls), frame assembly
- carpentry machine
- metal machine, laser/plasma cutting

Furniture machine

Cadwork and its CAM partners offer a complete solution for the control of all kinds of woodworking machinery. You benefit from the expertise of partners who have acquired machine control skills over several decades.

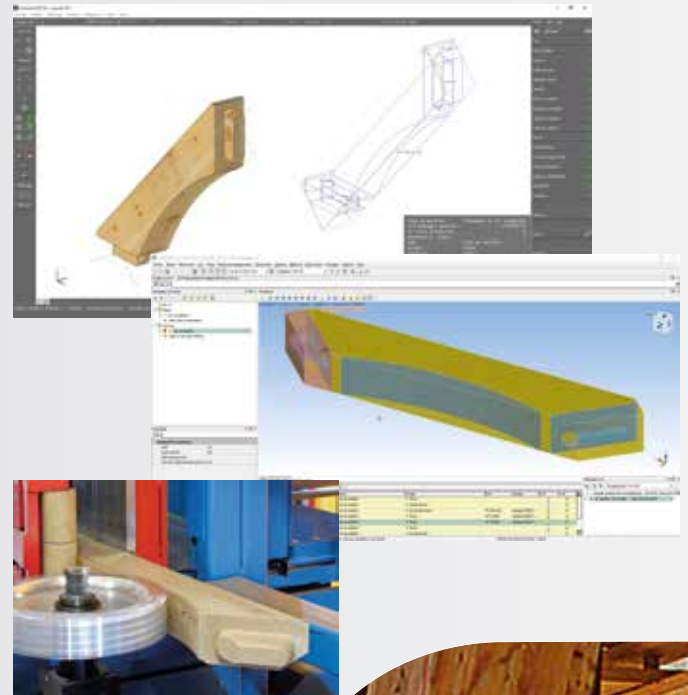
In the world of wood, we distinguish 3 main families of machines: Beam, Panel and Assembly. Let's not forget the possibility of exporting to CNC metal cutting machines: profiles and plates.

Whatever the machine, to which the data will be transcribed, cadwork always works on the following principle: the designer designs his works with all the necessary cuts, contours, notches and drillings with company's know-how, all the recognition intelligence of cadwork analyses and exports the geometries into data read by your machine.

Cadwork is compatible with all major manufacturers.

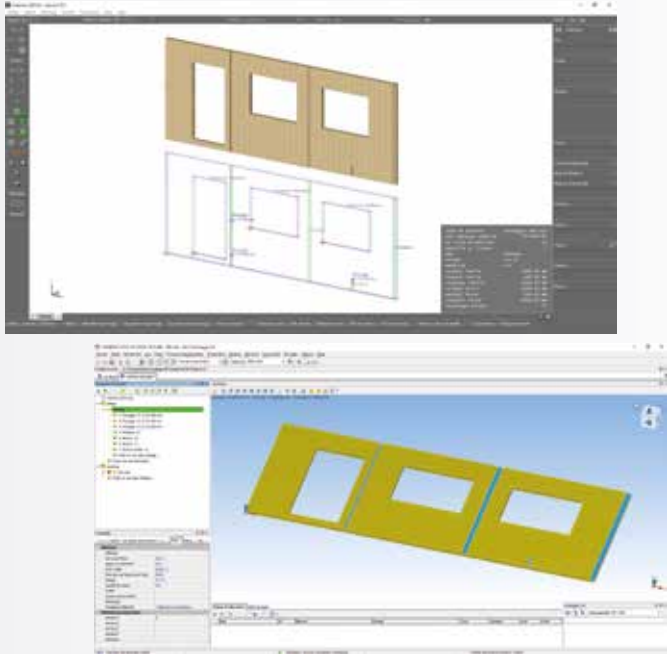
Solution Beam machine

This solution is intended for the beam processing machines. Trusses, purlins, rafters and timber frames will be processed from the 3D drawing made by engineering office. You can export directly to the machine format BVN, BTL, BTLX.



Solution Panel machines

Interior designers as well as woodworkers are able to drive your CNC. All the concerning machines are those processing the elements by contour to format the finished part and do the necessary processing: rabbets/grooves, drillings, half lap etc., up to 5-axis contour.

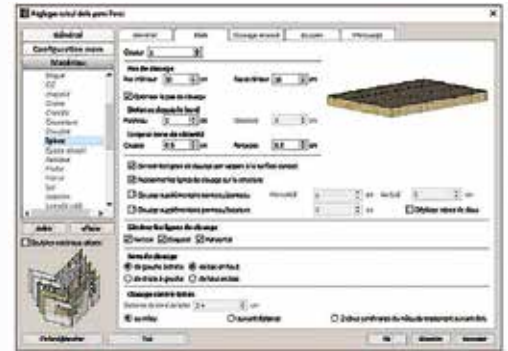


Nesting



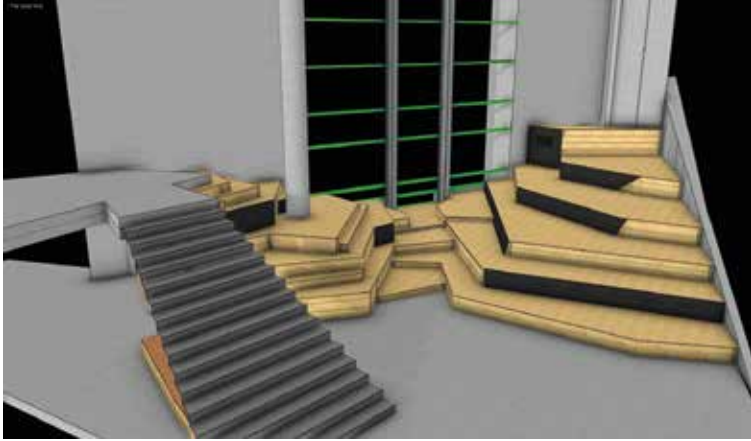
Solution Assembly machines

Your machine assembles timber frames: this solution will control all the most common framing machines on the market: Mach Diffusion, JJSmith, Hundegger WallMaster, Weinmann Wallteq. You can set the nailing pitch, the non-nailed zones, the safety zones: considering the opening modules, choice of tools for sawing or drilling/ripping.

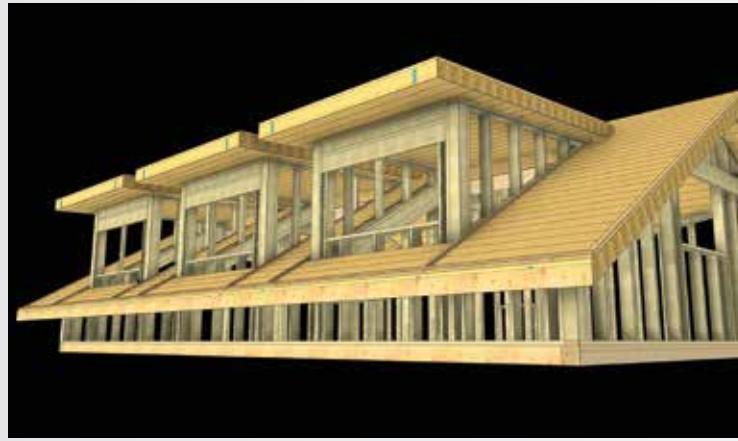


CUSTOMER PROJECTS

Interior Design - CCL Construction



Extension/ Renovation - Dimensions Bois



Public Buildings - CCL Construction



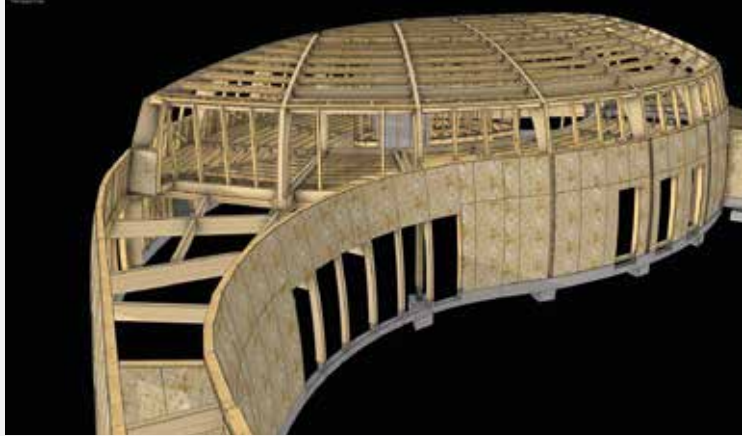
Individual House - Cuny Construction



Our clients
have talent!



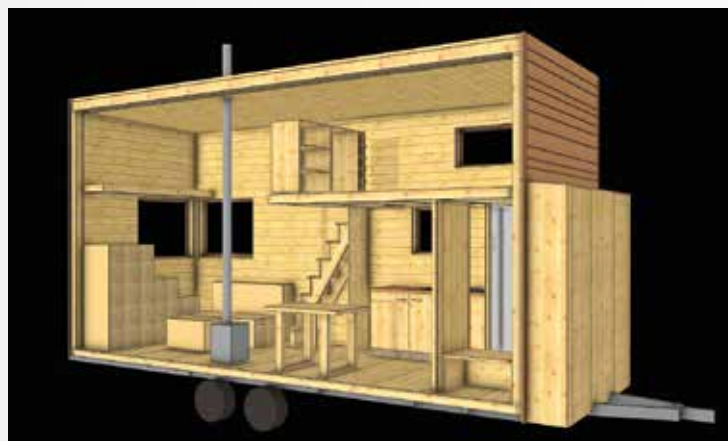
Exceptional Project - SACILC



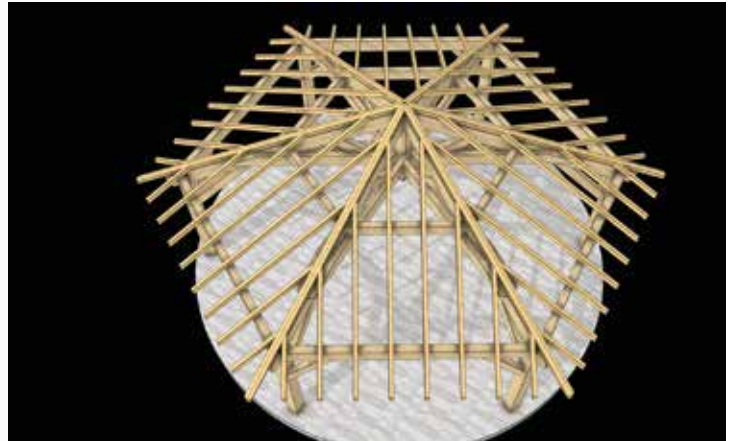
Stairs - Olivier Baillet



School Project - Lycée Saint-Joseph



Garden Shelters, Pergolas and Terraces Sari Les Charpentiers



cadwork Training

Importance of training is paramount:

Its application for a good grip from the beginning and also throughout the duration of use of your software will represent a real asset for your company and your employees.

cadwork offers flexible, fast and economical training and learning methods, adapted to individual requirements and levels. Our training courses are conducted by professionals, which is a guarantee for cadwork quality.

The training courses can take place on your companies, in a cadwork training center/office or in a partner institution.

Training

- Proximity: follow-up by your cadwork trainer
- Customized training: we adapt to your current needs,
- Follow-up: we follow you in the increase of your software competence throughout your use



Qualiopi
processus certifié

Level 1

For a good start, get trained and discover.

A 2 to 3 days training, depending on the option chosen, individual or in small groups, allowing a quick and autonomous mastery of the software. Thanks to this training, you will acquire the basics of the cadwork CAD/CAM 2D and 3D software in the fields of wood construction – carpentry or joinery, while benefiting from the telephone assistance and all the cadwork services.

An additional day is recommended 3-6 months after the first training to complete the basic knowledge.

The Level 1 training entitles you to a free 2-month trial cadwork version including access to technical support and access to the customer area and its numerous training materials (videos).

No prior knowledge of the software is required, basic knowledge of Windows is recommended.

Level 2

Improvement and specific modules

Level 2 training is highly recommended and is designed for users who are comfortable with the software.

It contributes to make you more efficient on a daily basis, to optimize your projects or to help you discover new tools to develop your activities.

Many courses are available, take advantage of it to progress and develop your knowledge.



Different possibilities are proposed, we adapt to your needs:

Small group training in a cadwork branch office
Individual training in a cadwork branch office



Customised in-company training



Training by webinar without travelling



In an approved training center



... Userclub

Each time a new version is released, you are invited to attend the Userclub to learn about the new features.

A moment of sharing between users and cadwork.
...And get a lot of tips.

MODULES

2 D

THE CONNECTED DRAWING BOARD

cadwork 2D is the module that brings your ideas to life. Your model is generated, but you still need to transmit the information to the different actors - Production plans - Building permits - Manufacturing details - Realization concept. Everything goes through 2D, the final tool of our solution.

3 D

A MODELER, OR NOTHING...

cadwork offers the only construction software that adapts to you, that offers you automation only when you want it, that accompanies you in the smallest as well as in the largest structures. Whether you use cadwork 3D for CONSTRUCTION or Joinery-Interior Design, your only limits are those you set for yourself. Whatever you imagine, you can draw it. Get off the beaten track and out of formatting: cadwork 3D is simply a tool, and you control it.

LISTS + DPP

BECAUSE 3D IS USELESS WITHOUT A PLAN

The list + DPP module is one of the most important in cadwork. It allows you to edit the production bundles and to fluidify the communication with the production workshop.

File View Options Format Tools Help (F1) 3D

View group: Mar 05

View group: Mar 05	Material	Quantity	Unit	Price	Total	Unit Price	Total Price
Mar-01-111	111	1	kg	100	100	100	100
Mar-01-112	112	1	kg	100	100	100	100
Mar-01-113	113	1	kg	100	100	100	100
Mar-01-114	114	1	kg	100	100	100	100
Mar-01-115	115	1	kg	100	100	100	100
Mar-01-116	116	1	kg	100	100	100	100
Mar-01-117	117	1	kg	100	100	100	100
Mar-01-118	118	1	kg	100	100	100	100
Mar-01-119	119	1	kg	100	100	100	100
Mar-01-120	120	1	kg	100	100	100	100
Mar-01-121	121	1	kg	100	100	100	100
Mar-01-122	122	1	kg	100	100	100	100
Mar-01-123	123	1	kg	100	100	100	100
Mar-01-124	124	1	kg	100	100	100	100
Mar-01-125	125	1	kg	100	100	100	100
Mar-01-126	126	1	kg	100	100	100	100
Mar-01-127	127	1	kg	100	100	100	100
Mar-01-128	128	1	kg	100	100	100	100
Mar-01-129	129	1	kg	100	100	100	100
Mar-01-130	130	1	kg	100	100	100	100
Mar-01-131	131	1	kg	100	100	100	100
Mar-01-132	132	1	kg	100	100	100	100
Mar-01-133	133	1	kg	100	100	100	100
Mar-01-134	134	1	kg	100	100	100	100
Mar-01-135	135	1	kg	100	100	100	100
Mar-01-136	136	1	kg	100	100	100	100
Mar-01-137	137	1	kg	100	100	100	100
Mar-01-138	138	1	kg	100	100	100	100
Mar-01-139	139	1	kg	100	100	100	100
Mar-01-140	140	1	kg	100	100	100	100
Mar-01-141	141	1	kg	100	100	100	100
Mar-01-142	142	1	kg	100	100	100	100
Mar-01-143	143	1	kg	100	100	100	100
Mar-01-144	144	1	kg	100	100	100	100
Mar-01-145	145	1	kg	100	100	100	100
Mar-01-146	146	1	kg	100	100	100	100
Mar-01-147	147	1	kg	100	100	100	100
Mar-01-148	148	1	kg	100	100	100	100
Mar-01-149	149	1	kg	100	100	100	100
Mar-01-150	150	1	kg	100	100	100	100
Mar-01-151	151	1	kg	100	100	100	100
Mar-01-152	152	1	kg	100	100	100	100
Mar-01-153	153	1	kg	100	100	100	100
Mar-01-154	154	1	kg	100	100	100	100
Mar-01-155	155	1	kg	100	100	100	100
Mar-01-156	156	1	kg	100	100	100	100
Mar-01-157	157	1	kg	100	100	100	100
Mar-01-158	158	1	kg	100	100	100	100
Mar-01-159	159	1	kg	100	100	100	100
Mar-01-160	160	1	kg	100	100	100	100
Mar-01-161	161	1	kg	100	100	100	100
Mar-01-162	162	1	kg	100	100	100	100
Mar-01-163	163	1	kg	100	100	100	100
Mar-01-164	164	1	kg	100	100	100	100
Mar-01-165	165	1	kg	100	100	100	100
Mar-01-166	166	1	kg	100	100	100	100
Mar-01-167	167	1	kg	100	100	100	100
Mar-01-168	168	1	kg	100	100	100	100
Mar-01-169	169	1	kg	100	100	100	100
Mar-01-170	170	1	kg	100	100	100	100
Mar-01-171	171	1	kg	100	100	100	100
Mar-01-172	172	1	kg	100	100	100	100
Mar-01-173	173	1	kg	100	100	100	100
Mar-01-174	174	1	kg	100	100	100	100
Mar-01-175	175	1	kg	100	100	100	100
Mar-01-176	176	1	kg	100	100	100	100
Mar-01-177	177	1	kg	100	100	100	100
Mar-01-178	178	1	kg	100	100	100	100
Mar-01-179	179	1	kg	100	100	100	100
Mar-01-180	180	1	kg	100	100	100	100
Mar-01-181	181	1	kg	100	100	100	100
Mar-01-182	182	1	kg	100	100	100	100
Mar-01-183	183	1	kg	100	100	100	100
Mar-01-184	184	1	kg	100	100	100	100
Mar-01-185	185	1	kg	100	100	100	100
Mar-01-186	186	1	kg	100	100	100	100
Mar-01-187	187	1	kg	100	100	100	100
Mar-01-188	188	1	kg	100	100	100	100
Mar-01-189	189	1	kg	100	100	100	100
Mar-01-190	190	1	kg	100	100	100	100
Mar-01-191	191	1	kg	100	100	100	100
Mar-01-192	192	1	kg	100	100	100	100
Mar-01-193	193	1	kg	100	100	100	100
Mar-01-194	194	1	kg	100	100	100	100
Mar-01-195	195	1	kg	100	100	100	100
Mar-01-196	196	1	kg	100	100	100	100
Mar-01-197	197	1	kg	100	100	100	100
Mar-01-198	198	1	kg	100	100	100	100
Mar-01-199	199	1	kg	100	100	100	100
Mar-01-200	200	1	kg	100	100	100	100

ROOF PRO MODULE

THE PRAGMATIC TOOL FOR PROFESSIONALS

Are you a carpenter? Use the advanced features of the 3D module to carry out your projects. A tool specially made for you to make a roof definition and to establish structural elements in a record time...



ROOF PARTS

SIMPLY SIMPLE!

Realize any roof in a simple and intuitive way. Then extract take-off data simply and easily.



STAIRS

PARAMETRIC, BUT NOT ONLY ...

Thanks to the parametric models, you can quickly create standard stair by using the cadwork Stairs module. You can also realize all your desired stairs through cadwork 3D module.

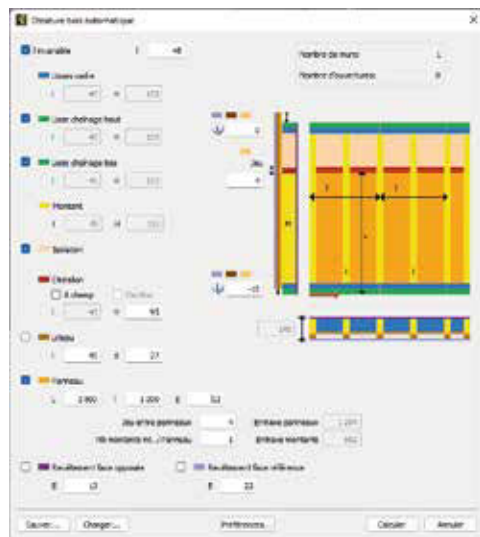


AUTOWALL

QUOTATION IN A FEW CLICKS

The Automatic Wall module allows you to fill roof and floor envelopes very quickly with a simple complex.

Based on the French MBOC principle (Maisons Bois Outils Concepts, constructive system developed under the guidance of the Comité National pour le Développement du Bois), the parameterization is very easy and modification in the modeler is always possible afterwards.



ELEMENT

WELCOME TO THE MOST POWERFUL FILLING MODULE

Many offer you parametric filling of your wooden walls: this is what cadwork does through the Autowall module.

But how can you differentiate yourself from the competition if someone else has already designed the details for you?

The Element module is the solution.

LAMELLA

THE MODULE USED BY GLULAM SPECIALISTS

The vast majority of glulam specialists work with cadwork today. The freedom of working in 3D and the geometric definition of the elements are the starting point for the workflow in many companies.

VARIANT

SAVE TIME WITH PARAMETRIC

Do you have company-specific structures that often recur in the shape, but not in the lengths, slope or sections?

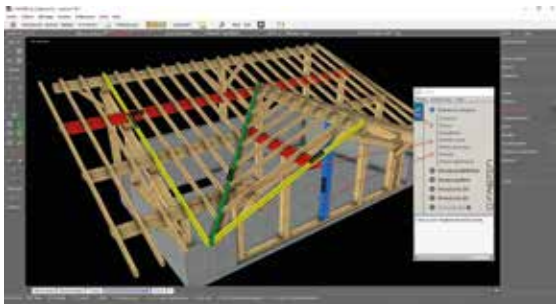
Develop a Variant or request a development of one or more Variants.

MODULES

C-FASTER

FROM YOUR CADWORK 3D TO YOUR CALCULATION NOTE IN 1 CLICK!

C-FASTER supports you with a static calculation model based on your design. Materials, sections, supports and construction types have been defined in cadwork. No need to enter this information a second time!



MESH EDITOR

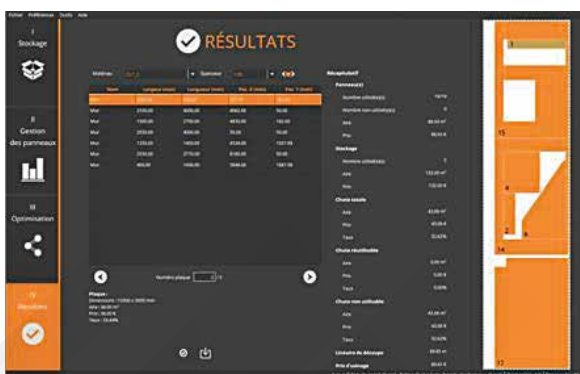
THE MESH OR THE OPTIMISED SOLUTION TO TRANSFORM POINTS INTO A SURFACE

The mesh allows to define the surface between 3 points. Each surface is then flat, but the assembly of these surfaces forms a geometry which can be very complex.

OPTIPANNEAUX

THE NEW GENERATION OF OPTIMISATION

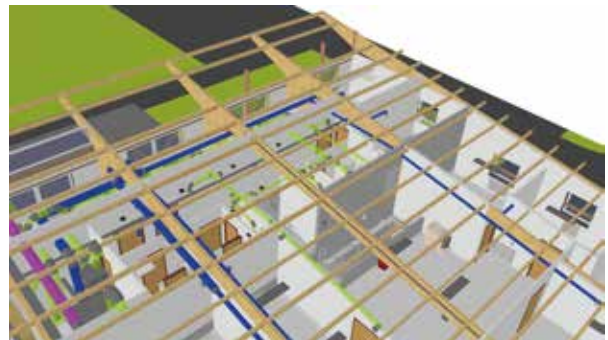
Optimization of your panels and direct exchange with cadwork - indispensable for anyone who has already used laminate panels for exterior cladding, facades, etc. No need for training; a simple video tutorial is sufficient!



BIM

WAT IS BIM?

The digital building information model (BIM) has become the new way of thinking about buildings, from their design to their destruction.



LASER MEASUREMENT PACKAGE

INTEGRATE THE MEASUREMENT DIRECTLY INTO CADWORK

Surveys on the construction site are often commissioned to external service providers and represent a significant cost. Nowadays, you can carry out your own professional surveys easily and inexpensively. This means that the entire added value remains in your own company. Measuring is designing, and this is possible with the cadwork Connect module, which has been specially developed to open the PC communication ports for Leica measuring instruments.



ASSEMBLY MACHINE

WHAT GOES TOGETHER COMES TOGETHER

The assembled elements combine both beams and panels.

PANEL MACHINE

ONE PANEL, 3 DIRECTIONS

Panels are elements that are found particularly in the field of joinery or solid wall construction (CLT).

BEAM MACHINE

BEAMS, TYPICAL ELEMENTS OF TRADITIONAL CARPENTRY

Thanks to a total recognition of the processing carried out on the raw part, which will have been obtained in the 3D modeler in free creation, a control file adapted to each brand and model of machine is created.

MAPS

SUPPORT ITS DESIGN ON THE REALITY

A building is unique. A beautiful building is unique and designed to match the environment.

PDF IMPORT

MAKE QUOTATIONS FROM PDF FILES

Importing a vectorized PDF file allows you to position 3D elements by clicking on the points of the PDF drawing. A quotation accompanied by a 3D becomes easy.

WEBVIEWER

THE ADVANTAGES OF A 3D VIEWER

Your 3D can be read on any support: PC or tablets. You need to make yourself understood with a 3D by your interlocutor, the WebViewer is the fast and flexible solution.

You will be able to measure, make cuts, integrate the project on a Google Maps background, add shadows.

On site, the use of QR codes for the parts produced will allow you to locate them on the site very quickly.



▪ SINCE 1985 ▪

cadwork 04
A WORK4CAD COMPANY 

(FR) +33 (0)3 63 21 99 20 | (CH) +41 (0)21 943 00 40 | (BE) +32 2 320 55 12
admin@cadwork-04.ch

